

Erewash walk 1 (2.8 km)

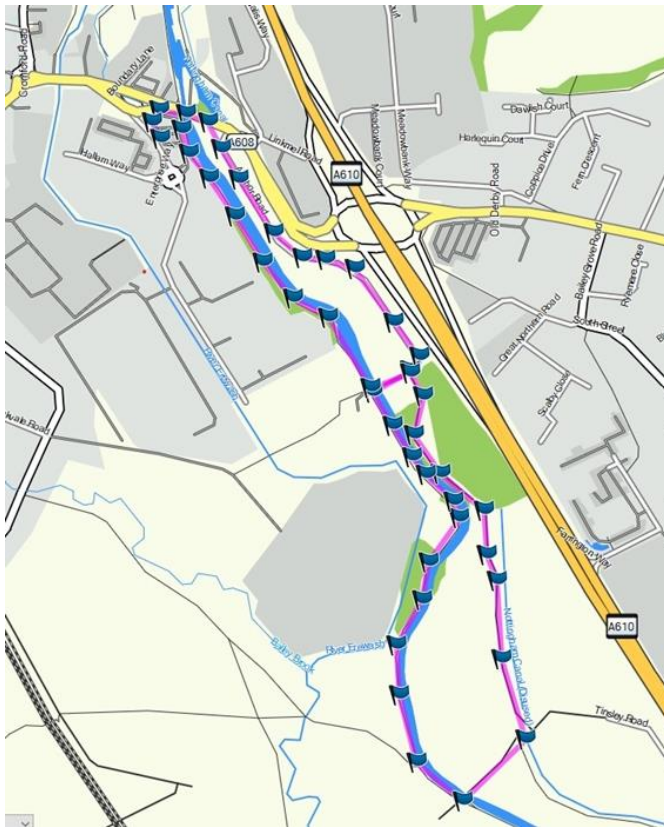


Figure 1 Access from the A610 towards Langley Mill, then left at the traffic lights

This walk can be muddy along the towpath of the canal and in one dip can be very wet with large puddles. Please choose appropriate footwear.

For this walk we park in Lidl car park and cross the road through the KFC car park to a gate that gains you access to the canal. (fig 2)



Figure 2 On the far side of the car park

Turn right and follow the towpath passing this bridge and continue along until the next bridge. (Figure 3)



Figure 3 keep to the tow path past the first bridge

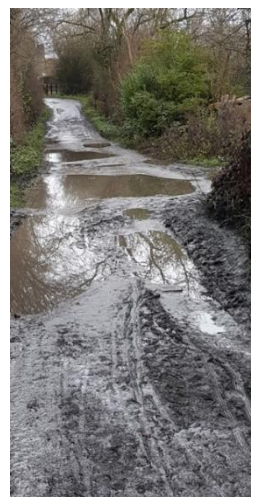
(This walk can be varied by turning it into a figure of 8 instead of a circular walk. Or a letter P if you do not want to walk along the road on the last bit see fig. 1)

When you get to the second bridge cross it. (Fig.4)



Figure 5 trainers may not be enough here

If there is rain you will be met by extensive puddles (fig. 5)





*Figure 4 Ignore the sign to right carry on over the bridge*

Around the corner ignore the sign to right (fig. 5) and continue over the bridge and follow the sign to the left (fig.6)

Over the bridge then turn left (fig. 6)

Along the next path is another canal, obviously disused. There are places along the way worth having a look at. Bird feeders and little fields behind coppices.

Kingfishers are often seen along the canal, but I have also seen goldcrests just inches above my head in the branches.



*Figure 5 Now turn left back towards Langley Mill*



*Figure 6 Turn right and follow the road back to the main road*

When you get to the end of the path turn right (fig. 7) and follow the road back to the main road. Turn left, pass over the bridge and then left at the lights back to the car park.